

2D LASER

LEVEL UP YOUR PRODUCTIVITY WITH
THE SPEED OF OUR MODULAR SOLUTIONS

CONTENTS

05/

DRIVING INDUSTRIAL
PROGRESS

03/

Evolve by integration

04/

Dynamic solutions to level up your production process

05/

Driving industrial progress

06/

OUR 2D LASER
SOLUTIONS

06/

Our 2D Laser solutions

09/ Platino Linear

12/ Laser Genius+

15/ Advanced technological options

19/ Material handling and automation

20/ Software

22/

PRIMA POWER
GLOBAL PRESENCE

23/

Prima Power Global Presence



Visit our website

Find out more about what our technologies can do for you and how you could benefit from our consulting and assistance services:

primapower.com



EVOLVE BY INTEGRATION

Today, every manufacturer in **sheet metal industry** has to step up their business. Competition is rising, customers have more demands, the market has fewer resources: companies have to optimize processes, automate production, save energy and money.

They have to evolve – and evolution is what we have always offered at Prima Power. We do it through the widest range of machines in the industry.

But mostly, we do it with **our unique ability to integrate our technologies into customers' processes** to enhance production performances.

It's about our engineering knowledge and our **customer-centered approach**. It's about our very history of technological integration.

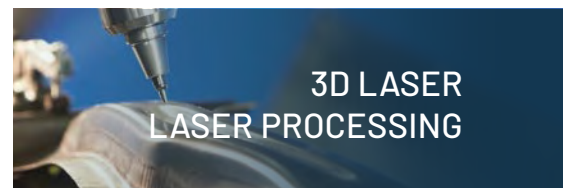
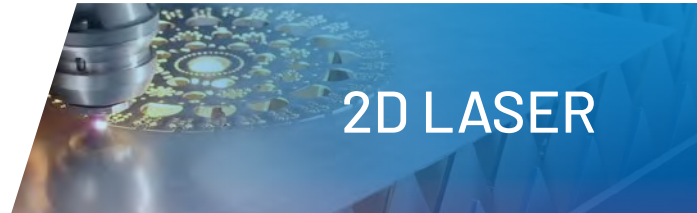
Our brand promise means all that. To level up productivity through targeted dynamic solutions. To support growth through modular and scalable offers. **To evolve by integration.**

DYNAMIC SOLUTIONS TO LEVEL UP YOUR PRODUCTION PROCESS

Prima Power provides businesses of all sizes with targeted dynamic technologies that **enhance profitability** in **sheet metal working**. We create **integrated automated solutions** designed to meet our clients' challenges and open to their future growth. We offer **high-performance machines** that deliver flexible and precise execution.

At Prima Power, value lies in the **focus on customers**. We build our offer on a full range of modular solutions, using our distinctive customer-centered approach and long-standing knowledge in engineering systems and machinery for sustainable, efficient manufacturing - all based on a **unique history of technological integration**.

Prima Power is present in our everyday lives.
DISCOVER HOW



DRIVING INDUSTRIAL PROGRESS

SERVING HIGH-TECH SECTORS WITH SPECIALIZED KNOWLEDGE




Leveraging its **diversified expertise**, Prima Power offers solutions that cater to a wide array of industries. Our range's breadth and modularity, combined with our cross-industry knowledge, allow us to provide **targeted and specialized solutions** aligned with the distinctive demands of each sector.

With a focus on customers' needs, we **facilitate the growth and progress of evolving industries**, aiming to boost customer profitability through advanced and reliable production systems.

Prima Power is present in our everyday lives. [DISCOVER HOW](#)



 [Visit our website](#)
Find out more

2D LASER SOLUTIONS

LASER CUTTING. THE MOST FLEXIBLE TOOL EVER

- 1 Best-in-class **performance** with **up to 20%⁽¹⁾ faster cycle times**, thanks to 28 m/s² acceleration and 180 m/min trajectory speed.
- 2 Optimal **cost-effectiveness** with **gas savings up to 40%⁽²⁾** and a remarkable **96%⁽³⁾ sheet utilization**.
- 3 Seamless **integration** with **modular and scalable automation** solutions, from stand-alone setups to fully automated production cells, integrable at any time.

(1) Calculated on typical laser cut parts with material thickness 1-6 mm. (2) Using our ECO-TOUCH Cut vs standard market solutions. (3) With our automatic nesting: average scrap on 20 nestings.

Laser cutting is an amazingly flexible and productive technology and there are no limits to the shapes that can be obtained. Precision is high, **cutting quality is excellent** and there is no distortion of the parts. Laser technology allows the **processing of a wide variety of metal materials** such as mild steel, stainless steel, aluminium, copper and brass with excellent results up to **30 mm thickness**.

2D laser cutting includes **flame** and **fusion cutting** methods.

Flame cutting uses oxygen, creating an exothermic reaction for **rapid cutting of thick materials** such as carbon steel, resulting in rough edges.

Fusion cutting uses inert gases such as nitrogen, preventing oxidation and

producing smooth, high-quality edges, **ideal for stainless steel and aluminum.**

The choice between these methods depends on the material and desired results, balancing speed and edge quality. In addition, Prima Power has developed **combinations of these technologies**, such as **air cutting** and **gas mixer** technology, to improve quality and/or reduce costs.





GREEN MEANS®: AN INTEGRATED AND PRAGMATIC COMMITMENT

In Prima Power we embrace an integrated and pragmatic approach to sustainability. We deliver solutions designed to optimize production cycles by **focusing on process efficiency**, with the aim of saving materials and energy without affecting the quality of the final output.

Our technologies simultaneously guarantee both a **saving of resources** and **economic savings for manufacturers**.

This means prioritizing effective and feasible solutions, like laser cutting applications we have been pioneering since 1979.

We have summarized our concept of sustainability in two words: **Green means®**.



OPTIMAL COST-EFFECTIVENESS WITH GAS SAVINGS UP TO 40%



HIGH LASER WALL-PLUG EFFICIENCY



HIGHLY EFFICIENT WITH UP TO 96% SHEET UTILIZATION



Visit our website

Find out more



2D LASER RANGE

LEVEL UP YOUR PRODUCTIVITY WITH THE SPEED OF OUR MODULAR SOLUTIONS



Prima Power's 2D Laser Cutting machines are high-tech solutions that deliver high performance, excellent cutting quality and extreme accuracy in the most diverse industry sectors.



Platino Linear[®]

Efficient, and easy-to-use laser cutting machine: the ideal affordable solution for the processing of any material and shape with **high cutting quality** and **great reliability**. Maintenance-free linear drive increases machine uptime and reduces operating costs.



Laser Genius^{®+}

Highly productive 2D laser cutting solution with **best in class dynamics** (max. acceleration: 28 m/s² and trajectory speed: 180 m/min) and high cutting quality. Available in three sizes (1530, 2040 and 2060) and with reversible layout to suit any production environments and requirements.

PLATINO LINEAR

THE RELIABLE AND PRODUCTIVE SOLUTION
FOR COST-EFFECTIVE 2D LASER PROCESSING



Maximize operational efficiency with Platino Linear, the efficient, easy-to-use, **low investment laser cutting machine with maintenance free linear drive for reduced operating costs, a 22% smaller footprint** for best-in-class throughput per square meter, and impressive cost effectiveness for profitable 2D laser processing.

The Platino Linear laser cutting machine is the result of the perfect balance between Prima Power's expertise and quality at **affordable investment and operating costs**.

It ensures **top quality performance** with a durable and long lasting machine that produces flawless results, thanks to its robust and sturdy design.

AFFORDABLE

- Rapid return on investment

ENERGY EFFICIENT

- Less energy required
- Lower environmental impact

COMPACT

- Best-in-class throughput per square meter thanks to a reduced footprint by 22%

MODULAR

- Platino Linear can be integrated with a wide range of automation modules

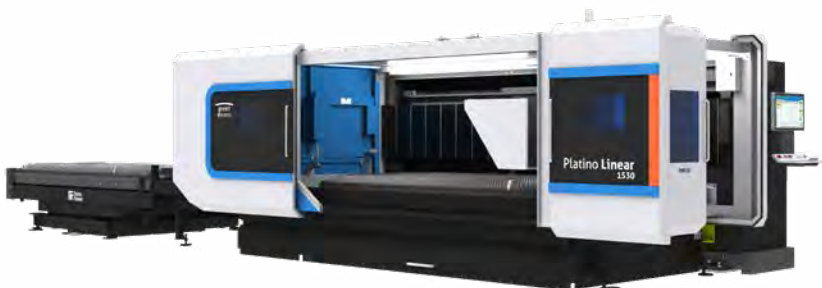
PLATINO LINEAR

Platino Linear's highly dynamic, maintenance-free linear drive **increases machine uptime** compared to conventional drive systems, resulting in high productivity, especially when processing thin materials.

Its **user-friendly interface** provide straightforward operation and a variety of smart features that enable effortless automation and connectivity.



The cabin allows you to take full advantage of the **very good accessibility** offered by the cantilever structure of the machine. It is ideal when you want to process small plates loaded manually without using the pallet changer.



Visit our website

Find out more



TECHNICAL SPECIFICATIONS

PLATINO LINEAR

Material working area	3,048, 1,524	(mm)
Axis strokes working area X, Y, Z	3,065, 1,565, 150	(mm)

MAXIMUM SPEED

Single axis, X,Y	100	(m/min)
Trajectory	140	(m/min)

Trajectory acceleration	17	(m/s ²)
-------------------------	----	---------------------

Positioning accuracy (Pa) and Repeatability (Ps) according to VDI/DGQ 3441 standards* X, Y	0.03	(mm)
--	------	------

Maximum overall dimensions, L x W x H (excluding light curtains and auxiliaries)	10,600 x 3,450 x 2,185	(mm)
--	------------------------	------

Fiber laser power	2,000 - 4,000 - 6,000 - 8,000	(W)
-------------------	-------------------------------	-----

Weight (basic machine)	~9,000	(kg)
------------------------	--------	------

Maximum weight that can be loaded on the pallet	1,050	(kg)
---	-------	------

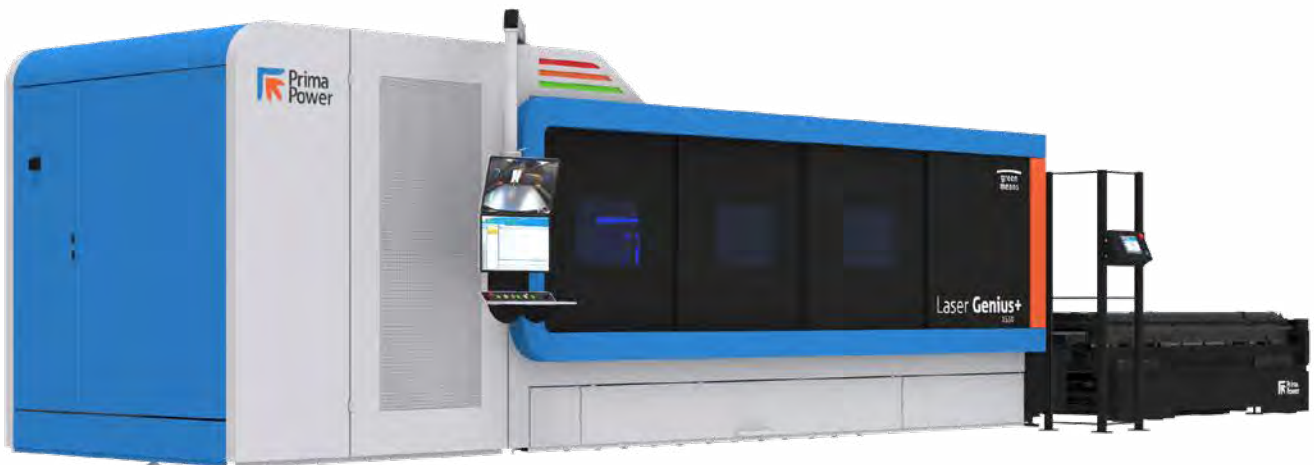
Maximum weight that can be loaded on elevator	3,300	(kg)
---	-------	------

The values shown refer to a standard machine. Prima Power reserves the right to change data without notice. Any pictures shown in the document are for information purposes only.

* The precision of the part depends on its type, size and pre-treatment, and on the application conditions.

LASER GENIUS⁺

TOP-OF-THE-RANGE 2D FIBER LASER MACHINE WITH REVERSIBLE LAYOUT AND TOP-CLASS COMPONENTS THAT GRANTS THE TOTAL CONTROL OF THE LASER PROCESS



Laser Genius⁺ is a **highly productive** and **flexible** fiber laser machine with reversible layout that can fit all customer's environments without configuration compromise making it suitable for all customer facilities and all kind of productions.

Thanks to the **high static** and **dynamic efficiency** of the machine structure, the Laser Genius⁺ can push fiber laser technology to maximum levels of performance.

These features, combined with the single and adaptive fiber laser head strategy, guarantee the Laser Genius⁺ a **maximum level of precision** and **cutting quality**.



PRODUCTIVE

- With high dynamic Genius⁺ is one of the more productive machines market



REVERSIBLE

- The symmetrical and reversible layout of Laser Genius⁺ increases the ease and flexibility



PLUG-AND-PLAY

- Laser Genius⁺ is a plug-and-play machine with all elements integrated



MULTI SIZE

- Available in 1530, 2040 and 2060 size in order while maintaining high performance regardless of the size of the machine



LASER GENIUS⁺

Laser Genius⁺ is **available in 1530, 2040 and 2060 size** to meet the production needs of the widest audience of customers, while maintaining high performance in terms of dynamics, cutting quality and reliability regardless of the size of the machine.



Laser Genius⁺ has a **reversible layout** that allows to configure the machine to have **high accessibility sliding doors** on the left side, the right one or both making it suitable for all customer environment and all kind of productions.

Laser Genius⁺ can process a **wide range of materials up to 30mm with high quality levels**, and it can be equipped with laser generators with **power ranging from 2 to 15 kW**.

With its high dynamics drives, Laser Genius⁺ reaches a **speed of 180 m/min**, making it one of the fastest and most productive machines on the market. The laser head sensors and artificial intelligence algorithms enable advanced monitoring and process control functions.



[Visit our website](#)
Find out more



[Visit our website](#)
Watch the video

TECHNICAL SPECIFICATIONS

LASER GENIUS⁺

	LG+ 1530	LG+ 2040	LG+ 2040	
Material working area	3,100, 1,550	4,200, 2,100	6,200, 2,100	(mm)
Axis strokes working area X, Y, Z	3,150, 1,600, 150	4,320, 2,200, 150	6,220, 2,200, 150	(mm)
MAXIMUM SPEED				
Single axis, X,Y	130	130	130	(m/min)
Trajectory	180	180	180	(m/min)
Trajectory acceleration	28	28	28	(m/s ²)
Accuracy, according to VDI/DGQ 3441 standards* Length of measuring: complete stroke				
Positioning (Pa)	0.03	0.03	0.03	(mm)
Repeatability (Ps)	0.03	0.03	0.03	(mm)
Maximum overall dimensions, L x W x H (excluding light curtains and auxiliaries)				
	12,300 x 3,400 x 2,730	14,800 x 4,100 x 2,730	19,900 x 4,100 x 2,730	(mm)
	2,000 - 3,000	2,000 - 3,000	2,000 - 3,000	
	4,000 - 6,000	4,000 - 6,000	4,000 - 6,000	
	8,000 - 10,000	8,000 - 10,000	8,000 - 10,000	
Fiber laser power	12,000 -15,000	12,000 -15,000	12,000 -15,000	(W)
Weight (basic machine)	~12,000	~15,000	~19,000	(kg)

The values shown refer to a standard machine. Prima Power reserves the right to change data without notice.
Any pictures shown in the document are for information purposes only.

* The precision of the part depends on its type, size and pre-treatment, and on the application conditions.

ADVANCED TECHNOLOGICAL OPTIONS

LEVEL UP YOUR PERFORMANCE WITH OUR KEY OPTIONS

Enhance the machine's performance and reduce resource consumption, with our highly technological packages dedicated to different applications. Availability is subject to machine configurations.

SMART Cut

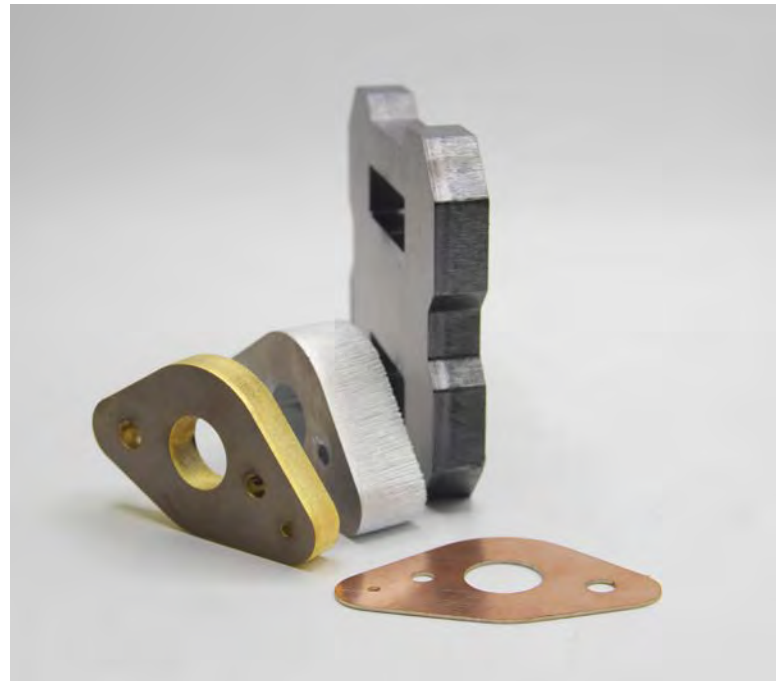
The SMART Cut option drastically reduces cycle times through intelligent management of head movements such as No.Piercing functionality, Grid Cutting technologies, Smart Moves from a profile to the other. **Cycle time reduction up to 30%.**

MAX Cut

With MAX Cut **piercing times are reduced by 90%**. This is made possible through integration of a customized technology database with a package of technological devices.

ADAPTIVE Cut

Prima Power's ADAPTIVE Cut technology is a cutting-edge system precisely **controlling the laser beam spot size and focus position**, effortlessly removing molten metal during cutting.



Say goodbye to the slow speeds of standard fiber lasers when processing the full of thicknesses and materials.

With ADAPTIVE Cut, enjoy **unparalleled cutting speeds, superior surface quality, and improved edge precision**. The technology also reduces bevel angles and creates a wider kerf for easier part removal, boosting productivity mainly in sorting automated processes as example 2D Picking and Stacking solutions. ADAPTIVE Cut, is available for all Prima Power 2D laser systems.

ADVANCED TECHNOLOGICAL OPTIONS



NIGHT Cut

NIGHT Cut increases machine uptime during unattended operation with automatic devices and process monitoring functions suitable for any material type or thickness. It is ideal for **intensive night shifts without operator intervention**. This functionality is based on LISA (Laser Intensity System Analyzer), developed by Prima Power, which can analyze different cutting processes.

Key features include:

- **Piercing Monitoring:** Real-time piercing adjustments for high performance cutting of medium to thick materials, improving surface quality.
- **Cutting Monitoring:** Detects problems during cutting, automatically stops and restarts the machine with adjusted parameters to ensure continuous operation.
- **Cutting Restart:** The Automatic Restart feature ensures continuous productivity by resuming operations after minor collisions or cutting flaws. It autonomously reenters the contour to prevent rejects and maintains a smooth workflow. If it fails three times, it moves on to the next part.
- **Automatic Switch Control:** Turns off lasers, chillers, motors and exhaust/filter system after inactivity, optimizing unattended production
- **Machine Status Notifications:** Real-time machine status overview
- **Optics Check:** Monitors and maintains optical components for optimum performance.

ADVANCED TECHNOLOGICAL OPTIONS

NOZZLE CHECK & OPC by camera

A dedicated device monitors, thanks to a camera positioned on the axis of the nozzle outlet hole, both the state of centering and the wear of the nozzles, thus ensuring **reliability and saving time**.



PUNCH Cut

The PUNCH Cut function utilizes a dedicated camera to identify the positioning and rotation of the sheet on the **work surface**. It enables **work on pre-processed sheets** by recognizing two special measuring holes on the piece.

GAS MIXER Cut

It **enhances quality and cutting speed** for medium-high thickness **mild steel** and **aluminum** and increases process reliability for medium-high thickness stainless steel. The machine can automatically switch between three gases (oxygen, nitrogen, and a mix of them), improving cutting quality and reducing burr height for medium to thick mild steel, stainless steel, and aluminum.

ECO TOUCH Cut

It is the flexible, profitable and sustainable 2D Laser nozzle pack patented by AIR LIQUIDE for the evolution of your cutting processes assisted by nitrogen or gas mixture. It increases your profit thanks to a gas optimization, CO_2 footprint reduction and **gas consumption reduction up to -40%**.



ADVANCED TECHNOLOGICAL OPTIONS

TRANSVERSAL SCRAP CONVEYOR

Instead of scrap collection drawers, the machine can feature scrap conveyors positioned as shown in the figure. These conveyors **streamline material handling** in laser cutting machines, automating scrap transportation to optimize workflow, reduce manual intervention, and ensure continuous operation.



ATC (Automatic Tip Changer)

In order to remove subjective operator decisions and to **maximize machine uptime**, the ATC automatically selects the correct nozzle according to the material, thickness and technology needed by the cutting process. In addition, it includes cleaning and calibration operations as part of the nozzle change sequence.



THIRD ADDITIONAL LOADING/UNLOADING STATION

Automatic pallet change reduces non-productive times, improves both automatic and manual operations, and optimizes productivity and versatility by performing loading/unloading operations in masked time.

The **additional loading / unloading station** provides the customer with the following benefits:

- **flexible** use for day / night production;
- greater **accessibility** to a manual loading / unloading area;
- **easy maintenance** or replacement of slats and pallets;
- **easy loading/unloading** in case of crane or manual loading for continuous production; easy manual unloading of sensitive parts.

MATERIAL HANDLING AND AUTOMATION

LEVEL UP YOUR PRODUCTION FLOW WITH OUR EFFICIENT AUTOMATION SOLUTIONS



COMPACT SERVER

- Cost-effective loading/unloading system
- Extremely compact and ecological
- Suitable for short periods of unattended production
- Safe and easy-to-use



COMBO TOWER LASER

- Automatic material flow and large storage capacity
- Very limited footprint
- Highly customizable (tower and material stacking heights. Second shelf unit available)
- Intelligent warehouse interface for raw and finished parts



PSR 2D (Picking and Stacking Robot)

- Automatic picking and stacking management, suitable for unmanned production
- 3 independent axes, with 18 suction cup groups each with dedicated z-axis
- Largest stacking area on the market
- Flexible and versatile buffering functions and dynamic stacking management



NIGHT TRAIN FMS[®]

- Automatic information flow from programming to production reporting
- Automatic material handling including intelligent buffering
- Fully automatic connection for multiple machines possible
- Almost no setup time required - quick, automatic transition from one product to another



SOFTWARE

LEVEL UP YOUR PRODUCTIVITY
WITH OUR DIGITAL ECOSYSTEM



- 1 One **comprehensive ecosystem** for the entire production flow.
- 2 **Improved profitability** with optimized material management and data-driven process and maintenance.
- 3 **Empower your team** with enhanced programming capabilities combined with intuitive interfaces.

Always be in control of your system, regardless of the technology, with Prima Power's complete suite of machine user interface software.

From controlling machine operations, tools, parameters, and production orders to the stacking of finished parts, all available directly on-board with an intuitive touch-screen interface.



Visit our website

Learn more about the
Prima Power Software

ALL IN ONE

CONTINUOUS AND INTEGRATED PRODUCTION FLOW



1

PLAN PRODUCTION PLANNING Tulus® Office

- ERP bidirectional communication
- Production schedule based on deadlines and machine availability
- Fully automatic production programming



2

PROGRAM CAD/CAM & SIMULATION NC Express

- CAD/CAM for programming 2D laser, punching, shear and combi machines, bending and automations
- Automatic programming and integrated solutions
- Fully automatic machine optimization



3

RUN INTUITIVE INTERFACE Tulus® HMI

- Pivot point of a holistic software ecosystem
- Closed loop between programming software and machine data
- Intuitive and user-friendly interface



4

CONTROL MONITORING AND REPORTING Tulus® Office

- Real time machine production status overview
- Customized report about production and machine performance
- Data visualization and customized dashboard for business intelligence solutions



5

TRUST SECURE DATA-DRIVEN SERVICE Remote Care

- Secure machine data collection for quick interventions
- Privacy compliance and cybersecurity certification
- Proactive intervention for machine downtime recovery

SPECIALIZED 2D LASER SOLUTIONS

PLAN

- Tulus Office Classic / Premium

PROGRAM

- NC Express Lite Classic / Premium
- Libellula.CUT Prima Edition

HMI

- Tulus HMI
- On-board software: OPTIA, Wizard, 2D Editor

CONTROL

- Tulus Office Basic Classic / Premium
- Tulus Terminal
- Tulus Analytics

TRUST

- Remote Care

LIFE-CYCLE SUPPORT



Visit our website
Find out more

CUSTOMER-FOCUSED APPROACH THAT TARGETS YOUR PRODUCTIVITY CHALLENGES

ANALYZE & ADVISE

- PROCESS ANALYSIS
- FEASIBILITY AND CYCLE TIME STUDY
- PRODUCTION FLOW SIMULATION
- FACTORY AND ERP INTEGRATION ANALYSIS
- MODULAR SOLUTION SELECTION

SET-UP & TRAIN

- SOLUTION SETUP
- PRODUCTION START-UP
- TRAINING
- PROCESS OPTIMIZATION
- PRODUCTION RAMP-UP



EVOLVE & INTEGRATE

- SOLUTION UPGRADE AND SCALE-UP
- SOFTWARE UPGRADE
- REFURBISHMENT
- PRIMA POWER ACADEMY
- RELOCATION

ASSIST & MAINTAIN

- PREVENTIVE MAINTENANCE
- SERVICE AGREEMENTS
- IN-FIELD, PHONE & REMOTE SUPPORT
- SPARE PARTS & TOOLS
- SPECIALIZED TECH SUPPORT

PRIMA POWER'S GLOBAL PRESENCE

WORLDWIDE CUSTOMER-FOCUSED APPROACH

Prima Power's global presence embodies its **dynamic approach and unwavering focus on customers**. With a widespread industrial and sales and service footprint, the company strategically positions itself where it's needed most.

A connection rooted in decades of knowledge and expertise enables Prima Power to truly **understand and support the unique needs of each market and industry**.

 Prima Power IS A BRAND OF **PRIMA INDUSTRIE GROUP**

~400 SERVICE ENGINEERS

15,000+ INSTALLED MACHINES

7 R&D AND PRODUCTION PLANTS

1,900 PEOPLE

550+ MIO € REVENUES

SEMEA

- 1 HEADQUARTERS
- 4 PLANTS
- 2 TECH CENTERS

 PLANT AND R&D CENTER

NORTH EUROPE

- 1 PLANT
- 2 TECH CENTERS

AMERICAS

- 1 PLANT
- 2 TECH CENTERS

APAC

- 1 PLANT
- 1 TECH CENTER



Find out where we are closest to you



Send us your request or start a live chat



Stay up to date with our activities





2D & 3D LASER CUTTING | BENDING | PUNCHING & SHEARING | AUTOMATION | SOFTWARE | FMS

Partner with the knowledge and dynamism of Prima Power. *Evolve by integration*